



PHIRI

Population Health Information
Research Infrastructure



Experience from Wales

Sarah Aldridge



www.phiri.eu



This project has received funding from the European Union's Horizon 2020 research and innovation programme under grant agreement No 101018317

Wales preliminary results



Conforming to the data model

SAIL Databanks hold linked databases from GP and hospital records and census data

Unable to provide:

- country origin code due to limitations in data collection
- Emergency data due to emergency codes in use not being specific enough

patient id
sex
age
socioeconomic score
country code
country origin code
diagnosis
diagnosis date
prescription
prescription date
number of visits to primary care
number of visits to hospital
number of visits to emergency care



www.phiri.eu



Wales preliminary results



Using the PHIRI Federated Analysis Application Docker

- Splendid! Brilliant user interface, though some bugs with analysis. Tech support has been incredibly helpful
- R scripts are available, so we've been working with those instead and making minor edits to adapt the generated reports.
- Exports aggregated data that can be used to generate European Age Standardised Rates and for future meta analysis

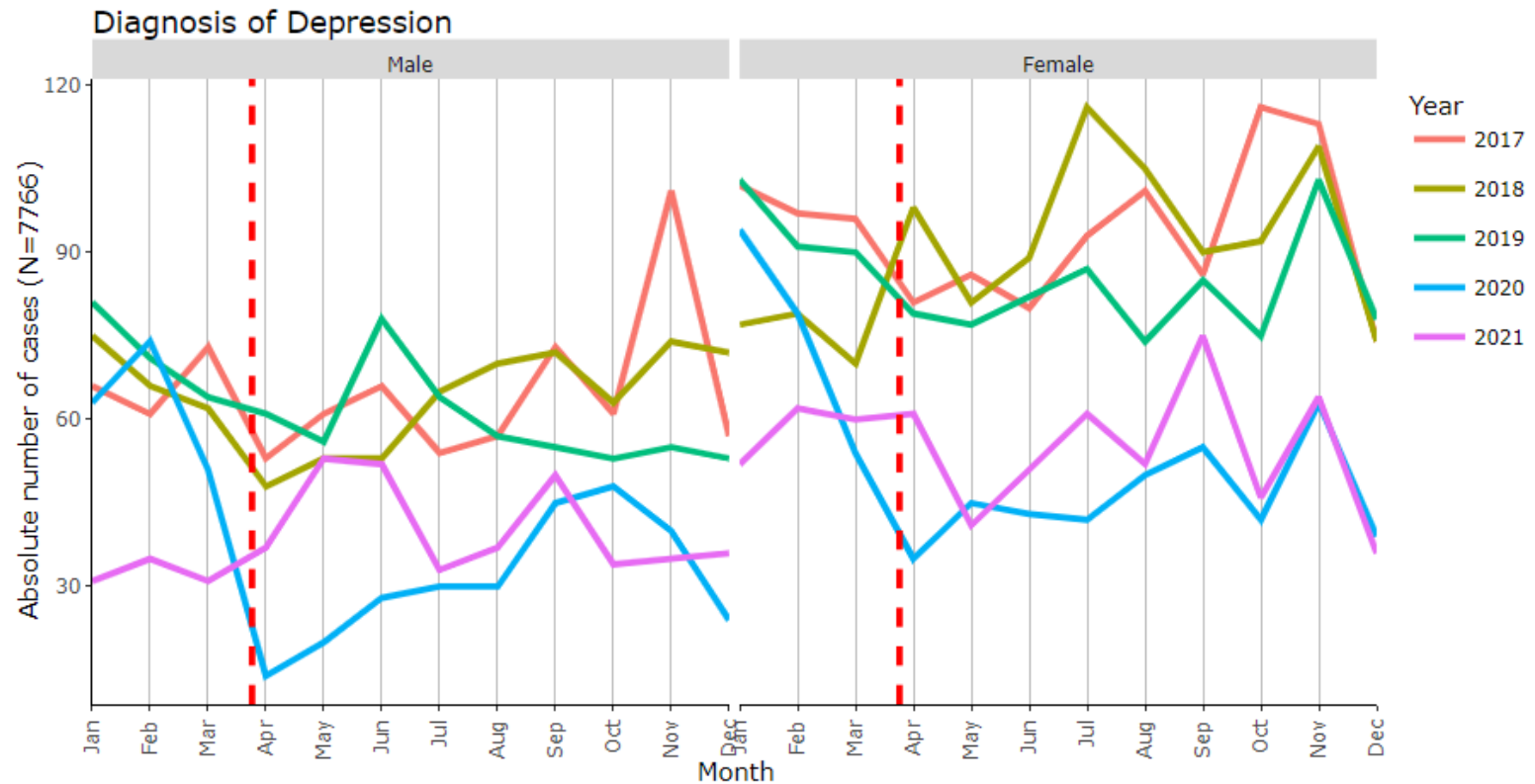


www.phiri.eu



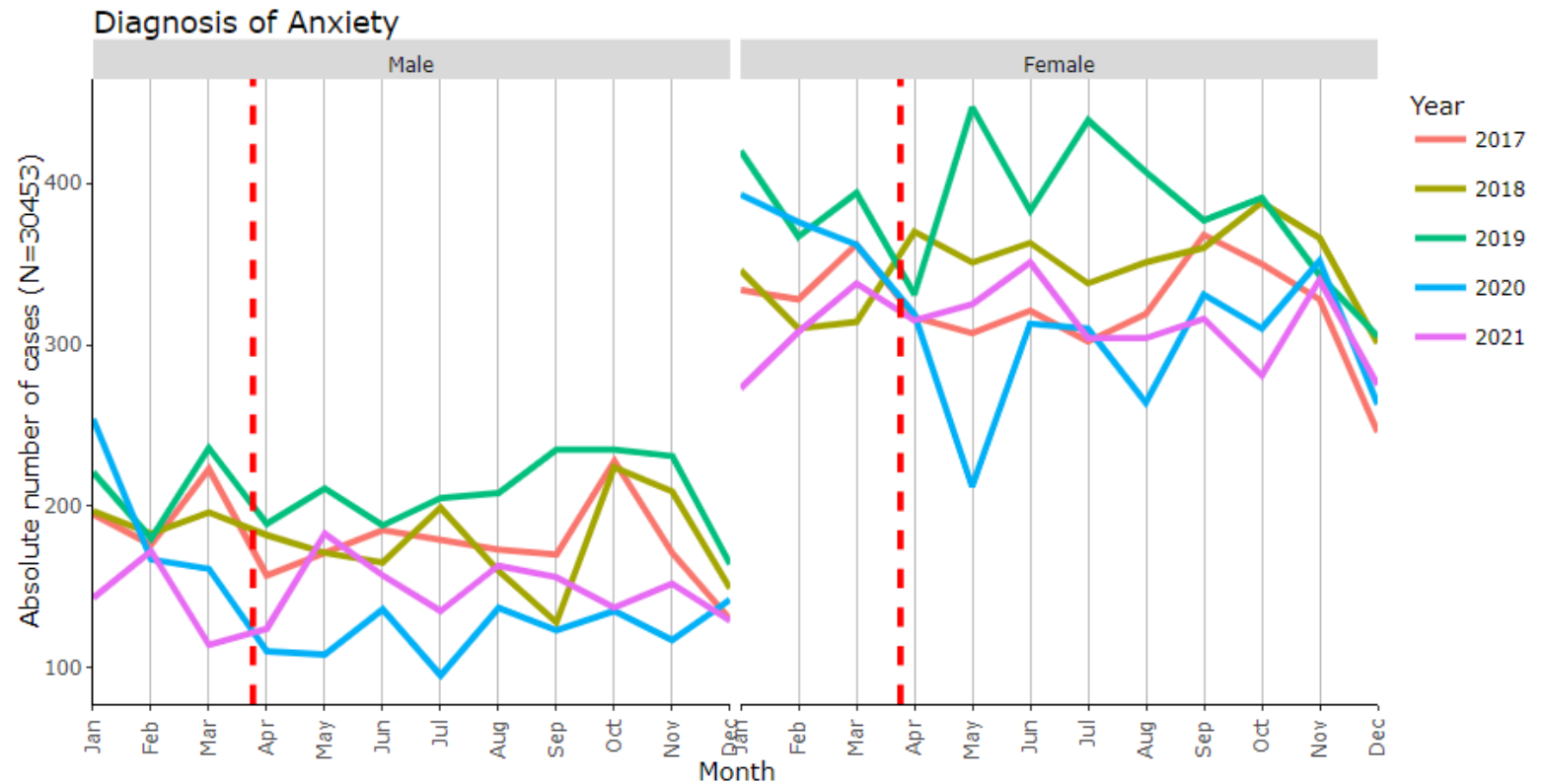
Wales preliminary results

- Results:
- Depression



Wales preliminary results

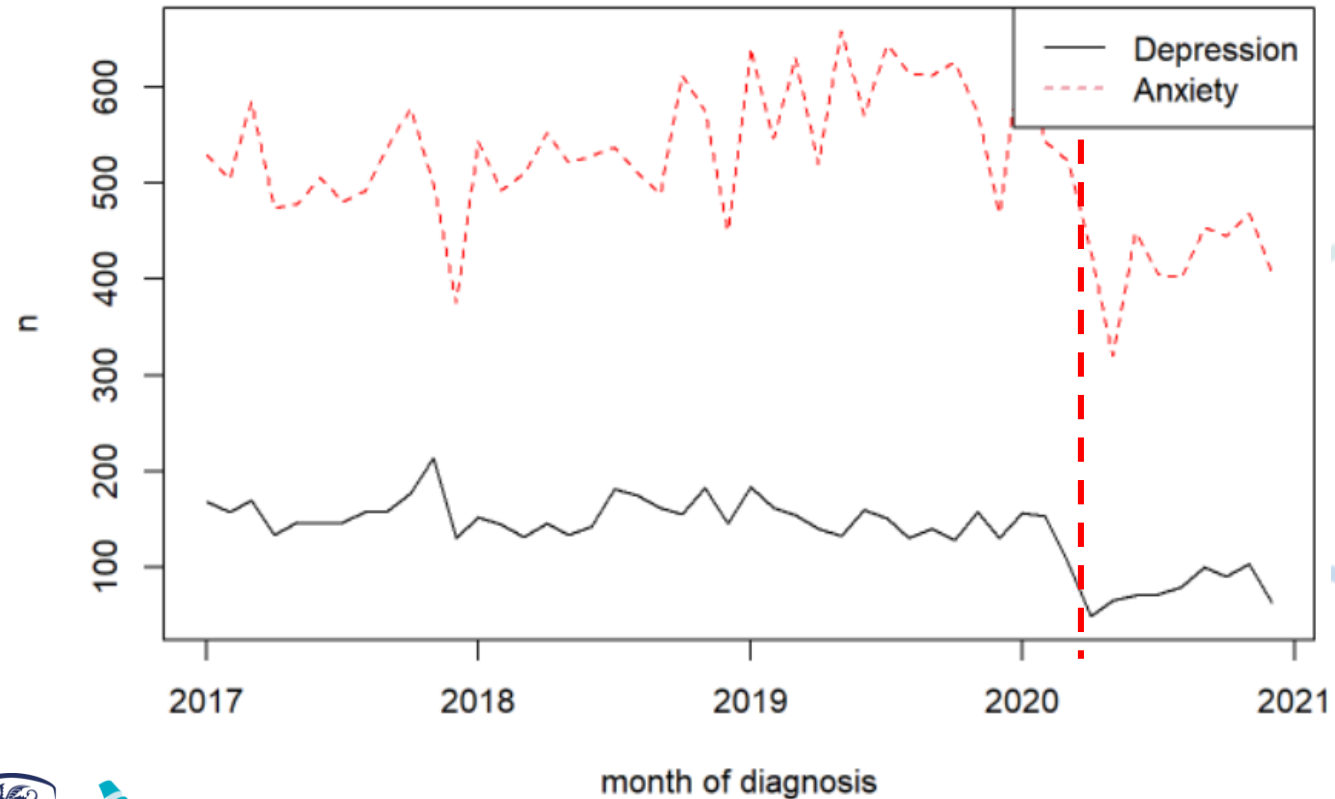
- Results:
- Anxiety



Wales preliminary results



- Results:
- Overview



www.phiri.eu

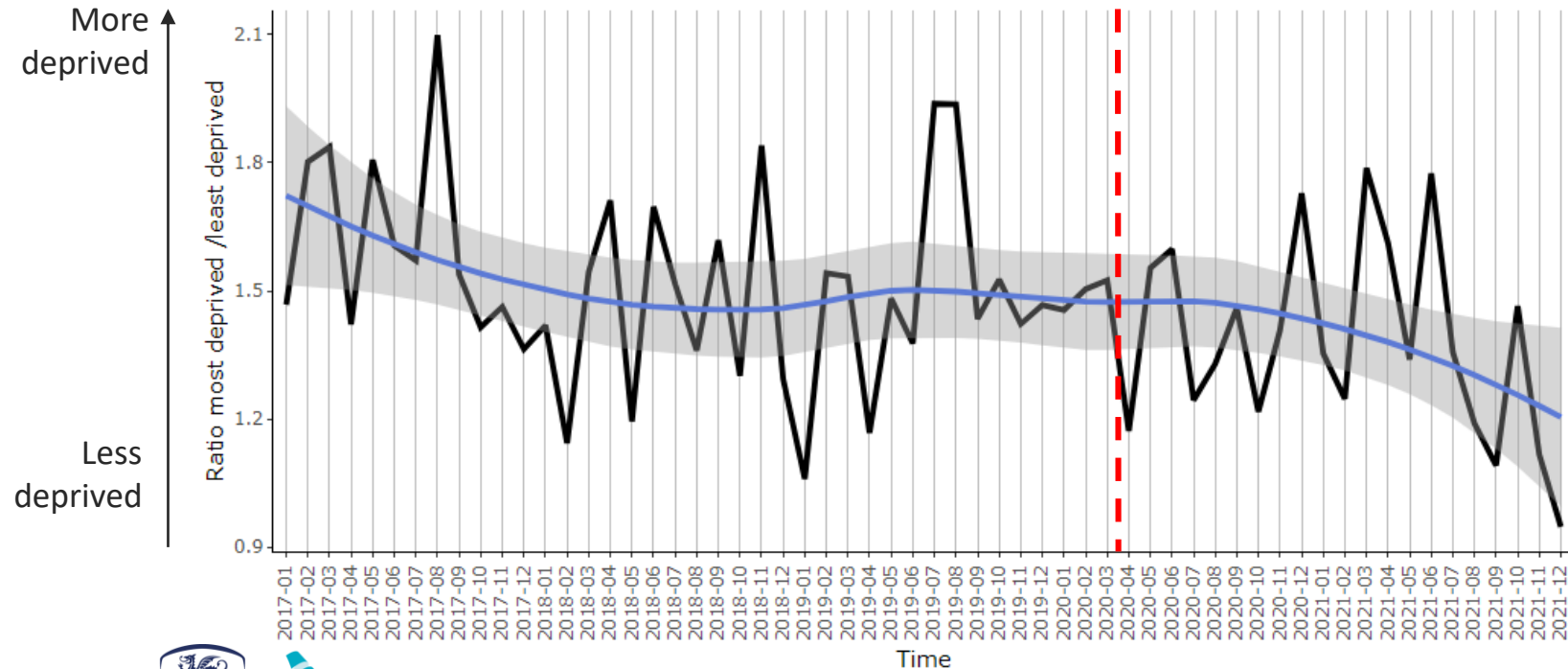


Wales preliminary results



- Results:
- Socioeconomics, deprivation ratio

$$y = \frac{\text{Number of patients with highest deprivation score}}{\text{Number of patients with lowest deprivation score}}$$



www.phiri.eu



Wales preliminary results



In summary:

- Collected data from Wales that conforms to the data model
- Docker is easy to use and the scripts are adaptable if needed
- Preliminary results show a drop in anxiety and depression diagnoses across Wales since the start of the pandemic, in some cases this has returned close to pre-pandemic levels.



www.phiri.eu

